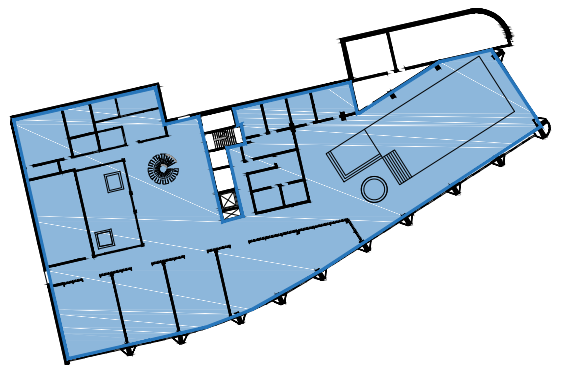


FACILITIES BUILDING. GROUND LEVEL



FACILITIES BUILDING. BASEMENT

- TOTAL COMMON OPEN SPACE :5,250 sqm (27.9%)
  - GROUND FLOOR : 4,525 sqm (24%)
  - ROOF TOP: 725 sqm (3.9%)

- FACILITIES COMMON AREAS :2,700 sqm (14.4%)
  - BASEMENT 1: 1,500 sqm
  - GROUND FLOOR : 1,078 sqm
  - LEVEL 1: 122 sqm

TOTAL COMMUNAL AREAS :7,950sqm (42.3%)

IMPORTANT NOTES:  
Do not scale from drawings. All dimensions to be checked on site before commencement of work. All discrepancies to be brought to the attention of the Architect. Larger scale drawings and written dimensions take preference. This drawing is copyright and the property of the author, and must not be retained, copied or used without the express authority of MARCHESE + PARTNERS INTERNATIONAL PTY. LTD.

FOR INFORMATION

REVISION	DATE	DESCRIPTION	BY
A	02/08/2018	FOR INFORMATION	PL

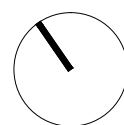
NOTES:

- For all outdoor and external design intent please refer Landscape Drawings.
- For Tree and vegetation management plan please refer Arborist and Ecologist report.
- For all external works, stormwater and services refer Civil and Stormwater drawings.

**marchesepartners**

Marchese Partners International Pty Ltd  
Level 1, 53 Walker Street, North Sydney, NSW 2060 Australia  
P +61 2 9922 4375 F +61 2 9929 5786 E info@marchesepartners.com  
www.marchesepartners.com

Sydney · Brisbane · Canberra · Melbourne · Adelaide · Perth  
London · Kuala Lumpur · Auckland · Christchurch  
ABN 20 098 552 151



CLIENT  
WATERBROOK

PROJECT  
WATERBROOK BAYVIEW  
CABBAGE TREE ROAD, BAYVIEW

DRAWING TITLE  
COMMUNAL AREAS

SCALE	DATE	DRAWN	CHECKED
1 : 500 @A1	02/08/2018	PL	E.B.D
JOB	DRAWING	REVISION	
14023	DA5.31-A	A	